

## Tabulky

*Sborník prací Filozofické fakulty brněnské univerzity. E, Řada archeologicko-klasická. 1960, vol. 9, iss. E5, pp. I-XI*

Stable URL (handle): <https://hdl.handle.net/11222.digilib/109781>

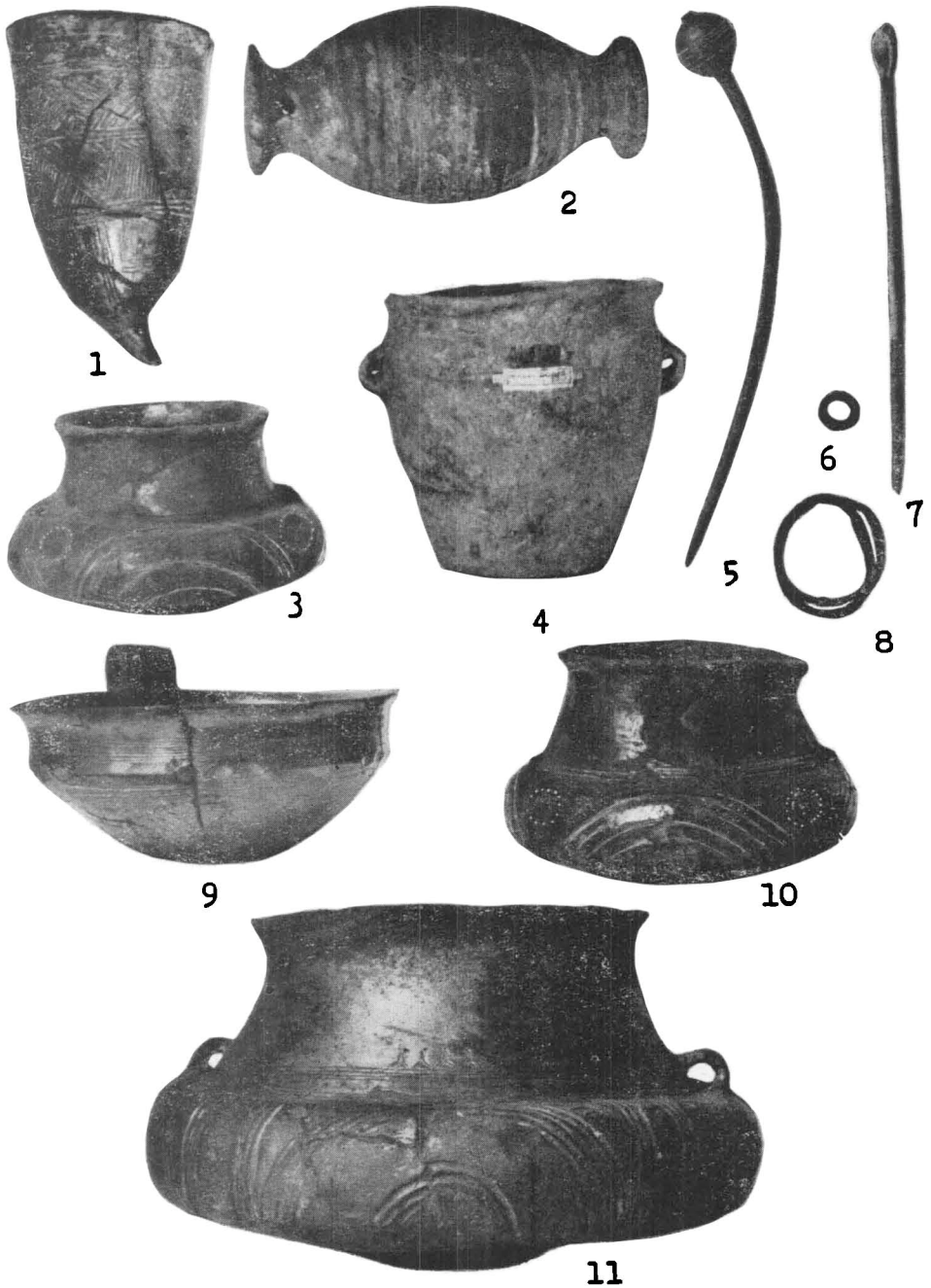
Access Date: 16. 02. 2024

Version: 20220831

Terms of use: Digital Library of the Faculty of Arts, Masaryk University provides access to digitized documents strictly for personal use, unless otherwise specified.

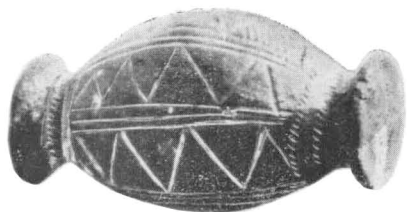
# TABULKY





II. Dömamyslice (Bez. Prostějov), Grab. Nr. 12. Verschiedene Maßstäbe.

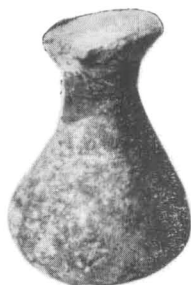
TAB III.



1



2



3



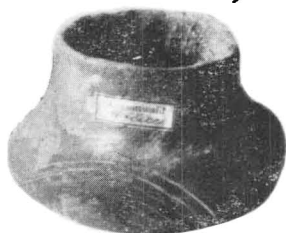
4



5



6



7



8



9

III. Určice—Kumberky (Bez. Prostějov), Grab. Nr. 4. Verschiedene Maßstäbe.



1a



1b

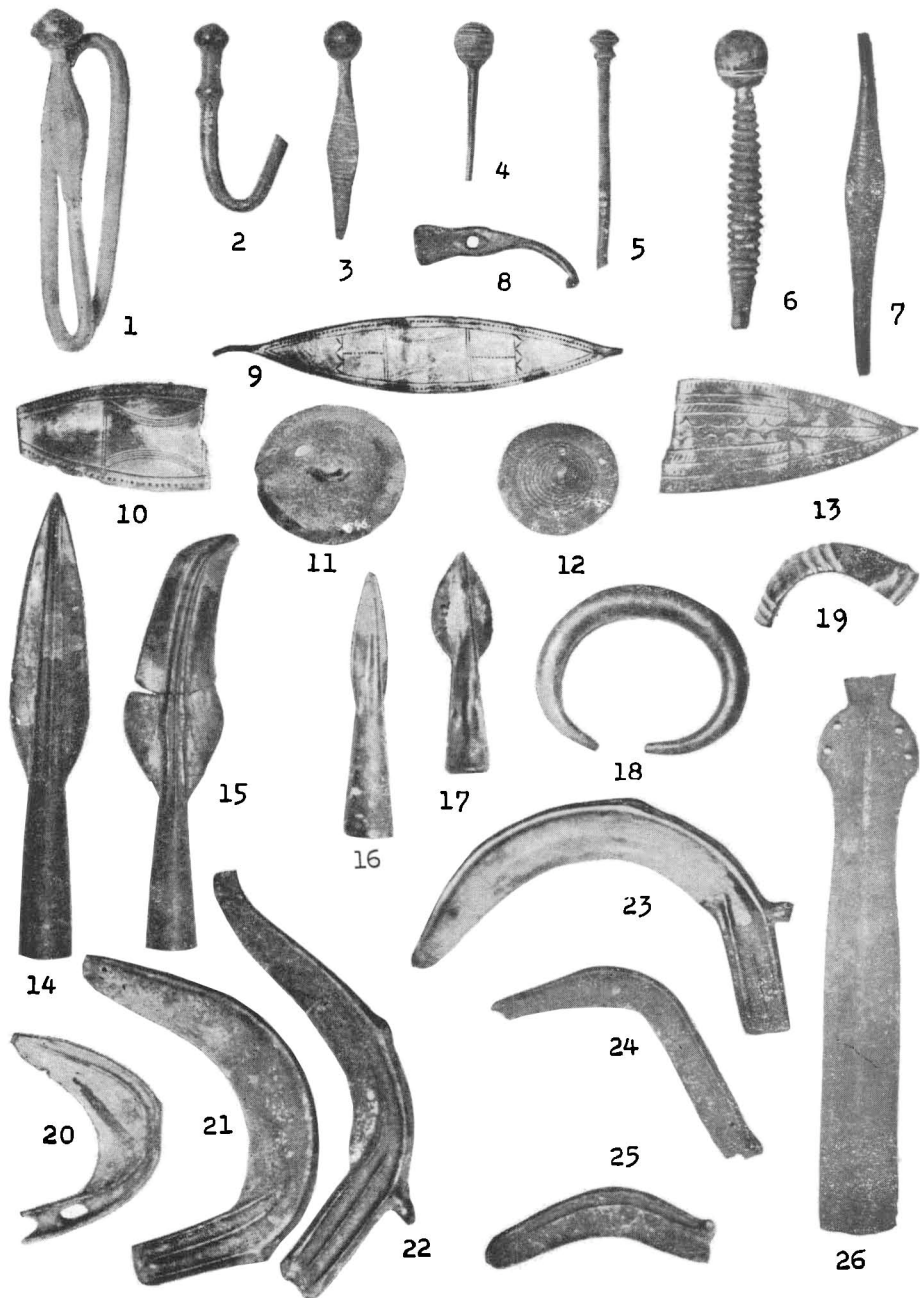


2

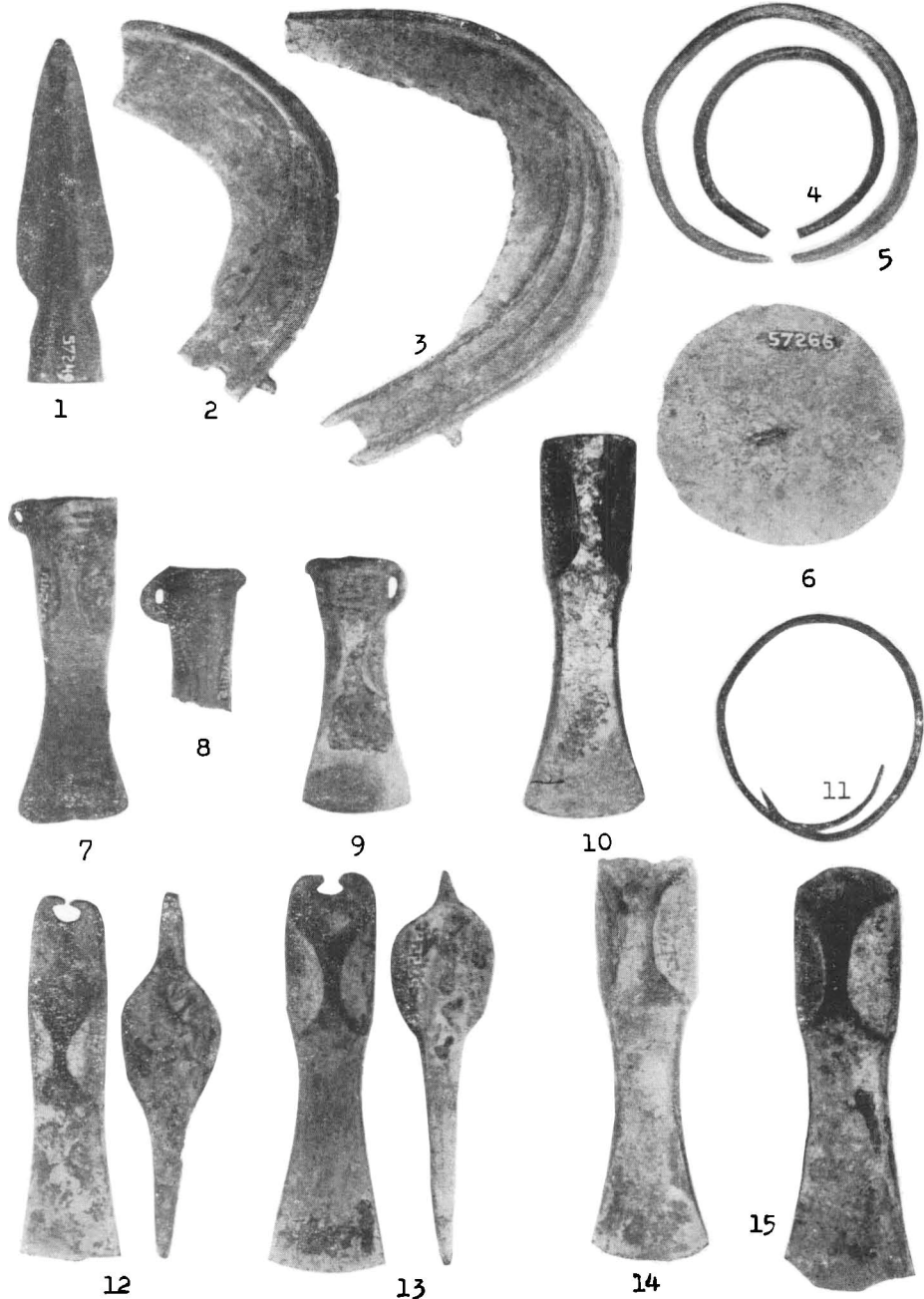


3

TAB. V.



V. Drslavice (Bez. Uherský Brod). Auswahl von Gegenständen aus dem Bronzedeput.  
Verschiedene Maßstäbe.



VI. Kuřim (Bez. Brno-Umgebung). Auswahl von Gegenständen aus dem Bronzedept.  
 Verschiedene Maßstäbe.





2



1



3



4



5



6



7



8



9



10



11



12



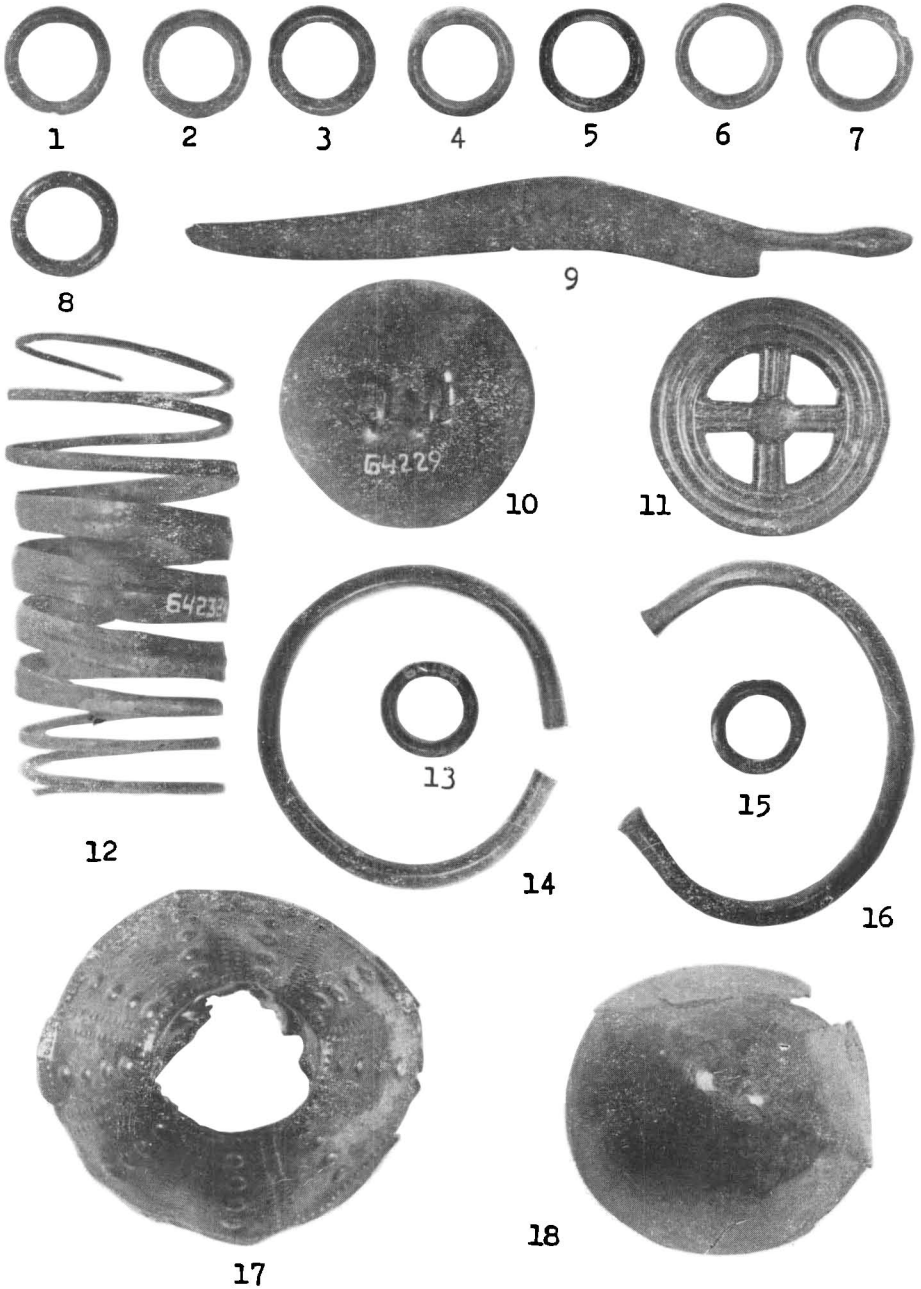
13



14



15



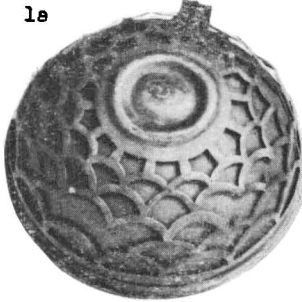
VIII. Malhostovice (Bez. Tišnov). Auswahl von Gegenständen aus dem Bronzedepot.  
 Verschiedene Maßstäbe.



1a



2a



1b



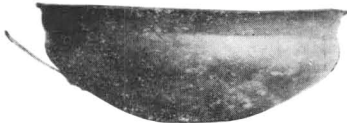
2b



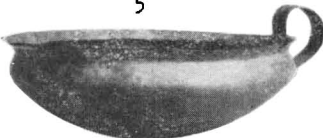
3



4



5



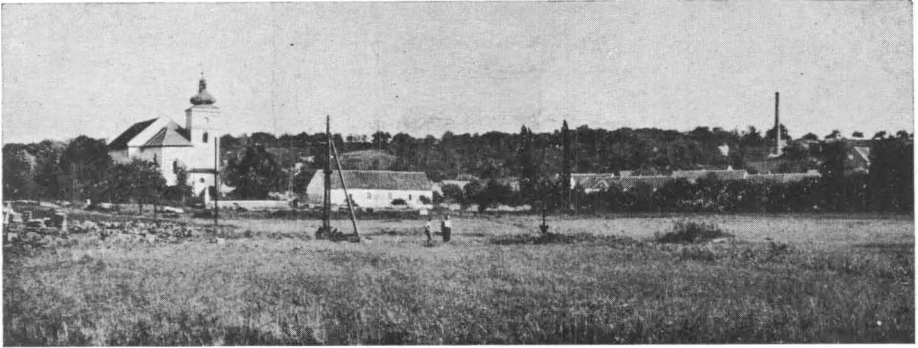
6



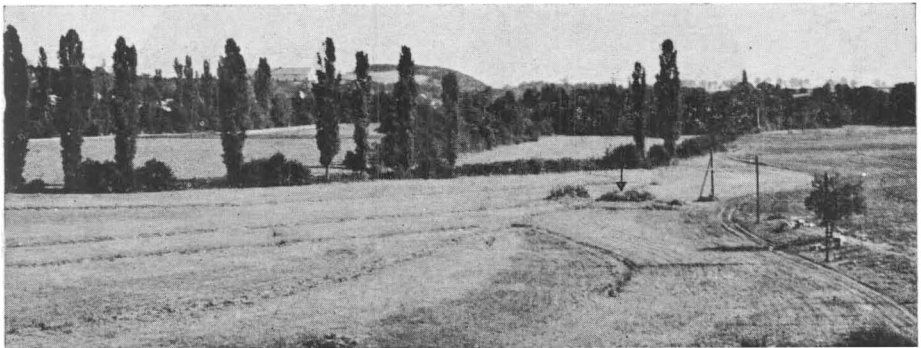
7



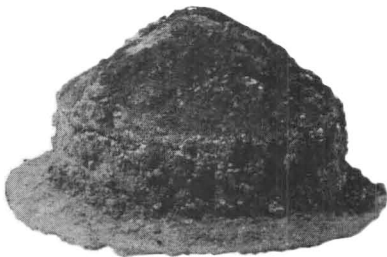
8



1



2

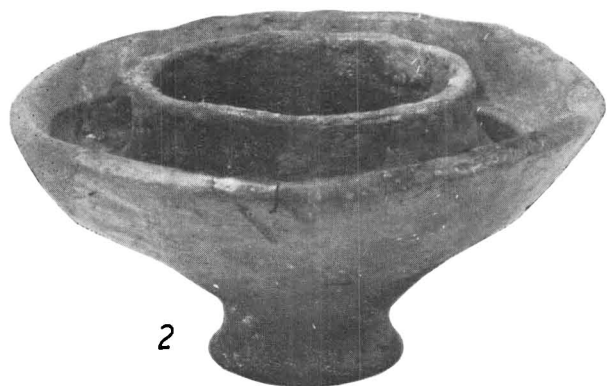


3



4

X. Horní Dunajovice (Bez. Znojmo). 1, 2 — Lage des Fundortes (mit Pfeil bezeichnet);  
3, 4 — eiserne Schildebuckel. (Photo: S. Ševčík.)



XI. Horní Dunajovice (Bez. Znojmo). 1 — Bronzekanne; 2 — Tonschüssel.  
(Photo: S. Ševčík.)